

# RUNAWAY TO RENMARK

16th - 21st September 2024

Tour Local



5 nights/6 days from **\$1,940**pp

*"Explore the Mediterranean of the South—its all about relaxing"*



5 NIGHTS  
STAY



\*Home pick up  
and return



LUXURY  
TRANSPORT



B L D  
5 3 5



DAILY  
REFRESHMENTS



DRIVER/  
TOUR LEADER



ENTRIES AS  
LISTED

## HIGHLIGHTS

- Overland Train Premium seating—breakfast and lunch- (to Bordertown)
- Explore the historic Port and Wharf of Morgan
- Burk Salter Wine Tasting combined with tasting platters of regional fare
- Sunset cruise in Renmark
- "Silo" Art in Paringa and Waikerie
- Loxton Historical Village
- The Pines Historic House and Gardens
- Lake Boga Catalina Museum



*"We've Got Australia Covered"*

# RUNAWAY TO RENMARK

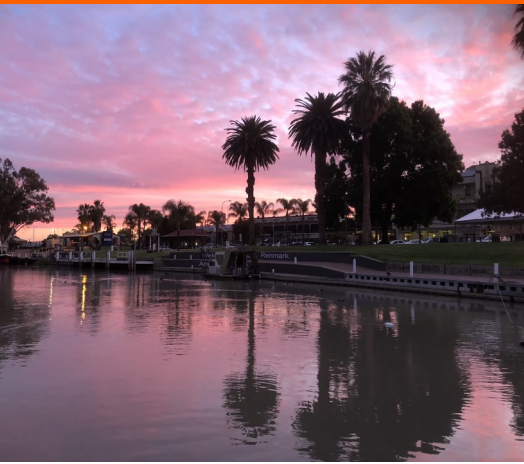
29th Jul - 3rd Aug 2024

16th - 21st September 2024

Tour Local

## DAY 1 : HOME to RENMARK

LL / D



So you want to celebrate the coming of Spring, well here is the ideal chance. Melbourne may still have grey skies but the South Australia Riverland is ready to welcome you with clear skies - the average temperature in Renmark in Sept is 21deg. with 4 rain days compared with our 17degs. and 11 rain days. Enough said – lets go! After a rather unattractive early home pick up you are on the luxurious **Overland Train** heading for the SA border. We meet you at Bordertown, where you rejoin the coach and journey north, arriving in the riverside town of Renmark late afternoon. Here we stay for the next **4 nights**, all rooms with **river view aspect**. Dinners and breakfasts are in the hotel so unpack and unwind.

**STAY:** HOTEL RENMARK

## DAY 2 : EXPLORE RENMARK

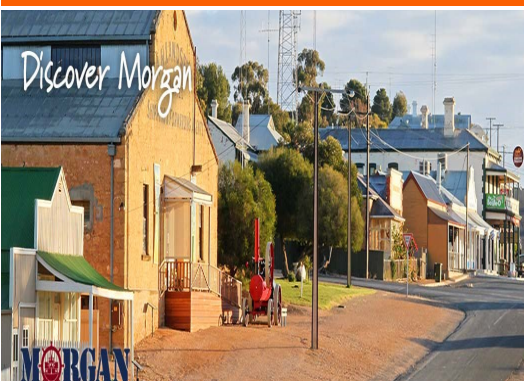
B / D



After a big day yesterday you awake to the bliss of our riverfront location. Not much driving today either. Our first stop today is **Olivewood Homestead**. Here we read and view about the history of the Chaffey brothers and the irrigation schemes that they got underway which changed the very landscape of this area forever. Next we have a short drive to **Almondco** for you to learn a little about this boutique industry and to shop here. Next, we head back into Renmark where you arrange your lunch and have a quiet hour or 2 before we drive to the **Silos at Paringa** which proudly feature so many of the pioneers of the Riverland. Then we head to Woolshed Brewery where we board our Renmark River Cruise for a sunset cruise, complete with drinks and little bites. Dinner is back in our hotel

## DAY 3 : FURTHER WEST

B / D



Today we follow the Murray River west with our first stop being at the Information Centre in Barmera. This is just a little place but with a story to tell—watch the fascinating video about the Loveday Internment Centre and take in the other displays here before we travel on via Queen Elizabeth Drive, skirting the banks of **Lake Bonney**, a pretty drive with some lovely gardens and delightful lake views. From here we travel to Morgan on the north side of the Murray on the Goyder Highway. In Morgan we provide a picnic lunch to be enjoyed near the waterfront as well as the opportunity to visit the **Museum** and generally just enjoy this **historic Port and Wharf town**. Crossing the Murray by ferry, we next head to Burk Salter Wines for a tasting and talk with the owners. We also stop at the Waikerie Silo Art before heading back to Renmark for another delicious dinner

*"We've Got Australia Covered"*

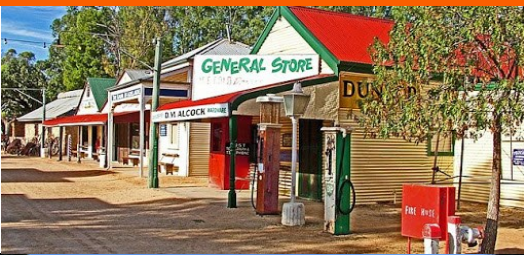
# RUNAWAY TO RENMARK



16th - 21st September 2024

## DAY 4 : EXPLORE LOXTON

B / D



A superb day ahead of us today, with lots of river views and visits to historical places of interest. Our morning is spent at the **The Pines**, for a guided tour of the house and gardens. While we are here we will be served a delicious morning tea. After this visit you have time to arrange your own lunch in the town and browse the shops after which it is a short walk (or drive if you prefer) to the **Loxton Historical Village**, simply referred to as "**The Village**". The Village is an award winning tourist attraction, recognised for its high quality displays and presentation of its vast array of exhibits. We also have some choices for which scenic route to take today, so lets wait and see about road/weather conditions before we settle on our options

## DAY 5 : RENMARK to SWAN HILL



Heading away bright and early after yet another delicious breakfast, we "lose" 1/2 hour as we cross back into Victoria as we strike out across Mallee country to arrive onto the Mildura Waterfront for morning tea and a chance to stroll along this part of the Murray. Next we call into Rio Vista, another of the Chaffey Bros properties, but quite different to Olivewood! We will provide a picnic lunch before leaving town. On the outskirts of Mildura we call into Varapadio Olive Estate to learn more about this vibrant industry before continuing south. arriving into Swan Hill for our last night stay

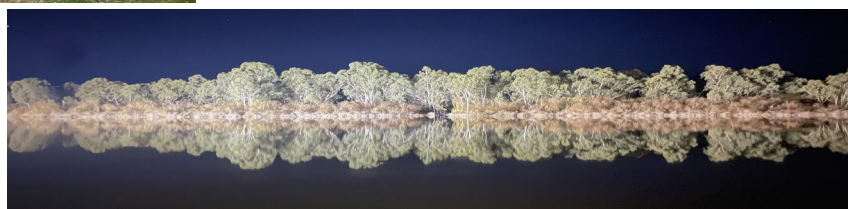
STAY : QUALITY SWAN HILL (or similar)

## DAY 6 : SWAN HILL to HOME

B / L



After our last breakfast on tour we depart to continue south arriving at Lake Boga Catalina Centre 30 minutes later. Why did we establish any airforce base in such a remote place in WWII? —you will discover why while we are here. We resume our journey south, with lunch and any other stops along the way for your travelling comfort but with the goal to have you all across Melbourne's peak hour traffic and home before nightfall. Thank you for travelling and we trust you have some delightful memories



*River Murray reflection  
taken from just outside our  
Hotel in 2023*

*"We've Got Australia Covered"*

# RUNAWAY TO RENMARK

Tour Local

16th - 21st September 2024



## COST

(based on per person twin share)

**Twin Share:** \$1,940

**Single Rooming:** +\$450

**Deposit:** \$500

## Payment Policy

Your **DEPOSIT** is required to secure your booking. This is transferable up until 3 months prior to tour.

Your **FULL PAYMENT** is required 2 months prior to our departure date. Refer to our T&C's for Refund Policy detail

## Payment Methods

### CREDIT /DEBIT CARD:

Go online **OR** Contact our office  
(1.5% surcharge applies)

### DIRECT DEPOSIT:

Westpac-Tour Local  
BSB: 033-636, Acc: 238103

**Ref:** Booking Number Reference (this will be given to you upon confirmation of booking)

### Wanting to share,

*but don't have anyone to share with?  
Let us know and we can try to find  
someone for you to share with!*

### We **HIGHLY** recommend Travel Insurance.

Contact our office and we can assist you in obtaining this.

## Why book with Tour Local?

We are a proud, family operated company, who have been providing quality tours for over 14 years now. If we can assist you in any way, please just ask.

- ✓ Our tours are designed for ages of 50+ and we take this into consideration when planning all aspects of our day to day activities.
- ✓ We can provide for a wide range of dietary and all-ability requirements.– if possible, please let us know about these at the time of booking
- ✓ Our drivers / tour leaders are fully trained, compliant with all safety and professional standards and fully committed to ensuring you have a wonderful holiday

## To Make a Booking:

1. Please head online to [www.tourlocal.com.au](http://www.tourlocal.com.au) and book under your desired tour. (secure payments can be made here too) **OR**
2. Contact our office during operating hours, and we will gladly assist you from there.

## Conditions of Travel

All bookings and payments are made in accordance with our Terms and Conditions of Travel (refer: [www.tourlocal.com.au](http://www.tourlocal.com.au)) and your booking and/or payment is taken to deem that you have read, understood and accepted such. Contact our office to arrange for a copy to be sent to you if you wish.

It is expected that all persons are able to navigate coach steps unassisted and are responsible for their own luggage.

**Key:** B = Breakfast (fully cooked and continental);

LL & LD = Light Lunch / Dinner; FL & FD = Feature Lunch / Dinner

L = Lunch & D = Dinner (dinner is usually 2 course bistro);

**Home pickup** applies to all tours of 3 nights or more, and to places located within 60km of our office (Pakenham).

Other pickups by prior arrangement incl. Airport/train station/Hotel

If you need pre or post tour accommodation speak to us for assistance if you wish.

**TOUR LOCAL : ABN: 22 131 320 655**

*"We've Got Australia Covered"*

[www.tourlocal.com.au](http://www.tourlocal.com.au) | [bookings@tourlocal.com.au](mailto:bookings@tourlocal.com.au) | (03) 5941 8800 | PO Box 371 Pakenham, VIC 3810